

# Mitras Flex Mount 1

## Quick Install Guide



Quick assembly / install guide for Mitras Flex Mount 1

## What's included



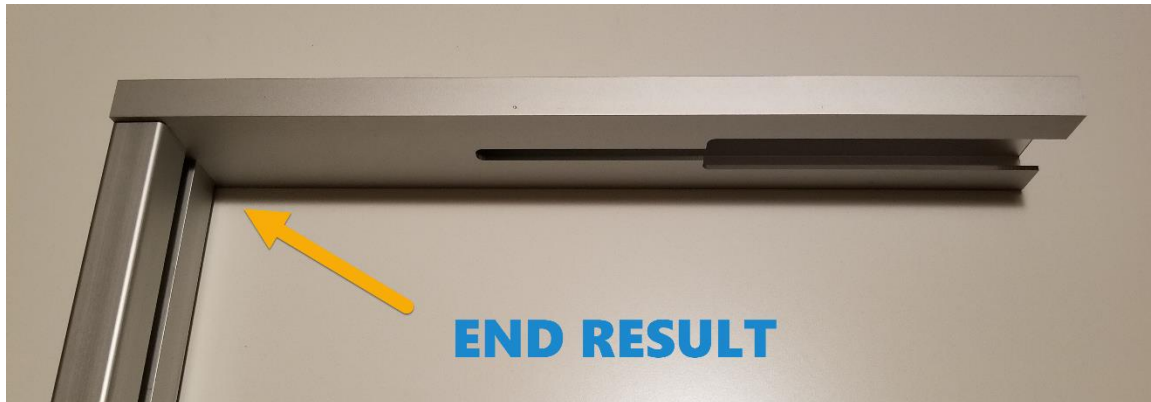
**Note:** Aluminum rail (long) and aluminum cable cover also included, but not shown in above photo.

## What you'll need

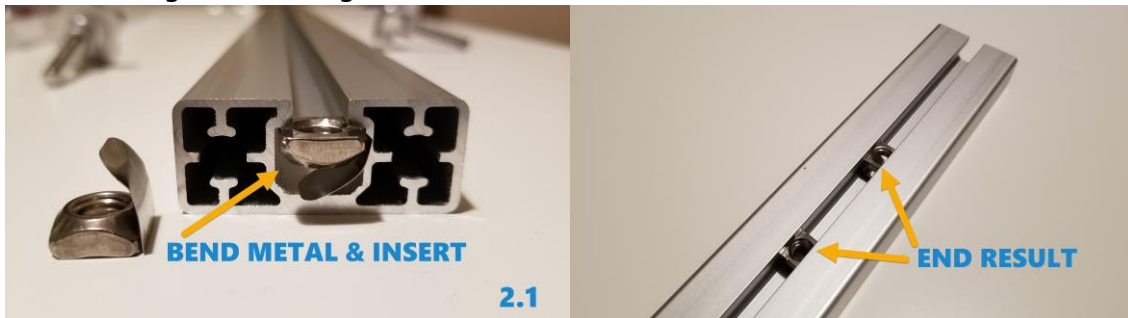
- Phillips screw driver
- 5/32 Allen key or wrench
- 7/32 Allen key or wrench
- Power drill / drill bit for drilling 2 holes in back wall of aquarium stand

## Assembly / Installation

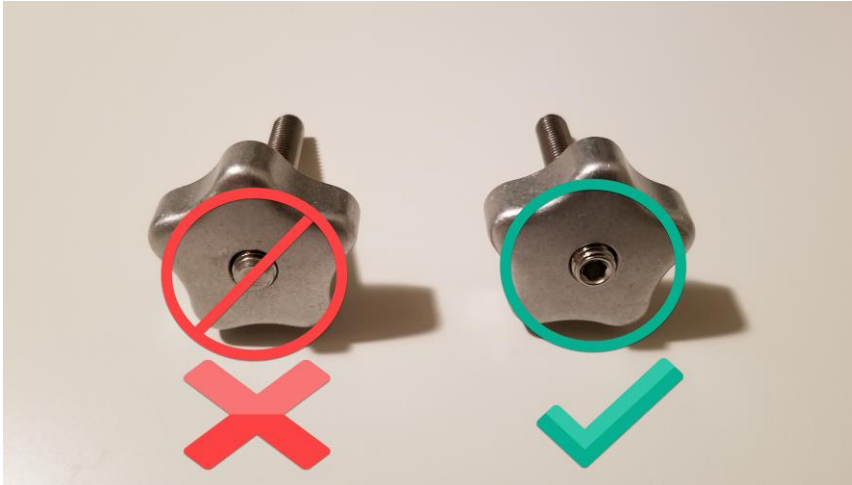
1. Connect pieces as shown below. Take note of the inside threads on the long aluminum frame and connect arm.



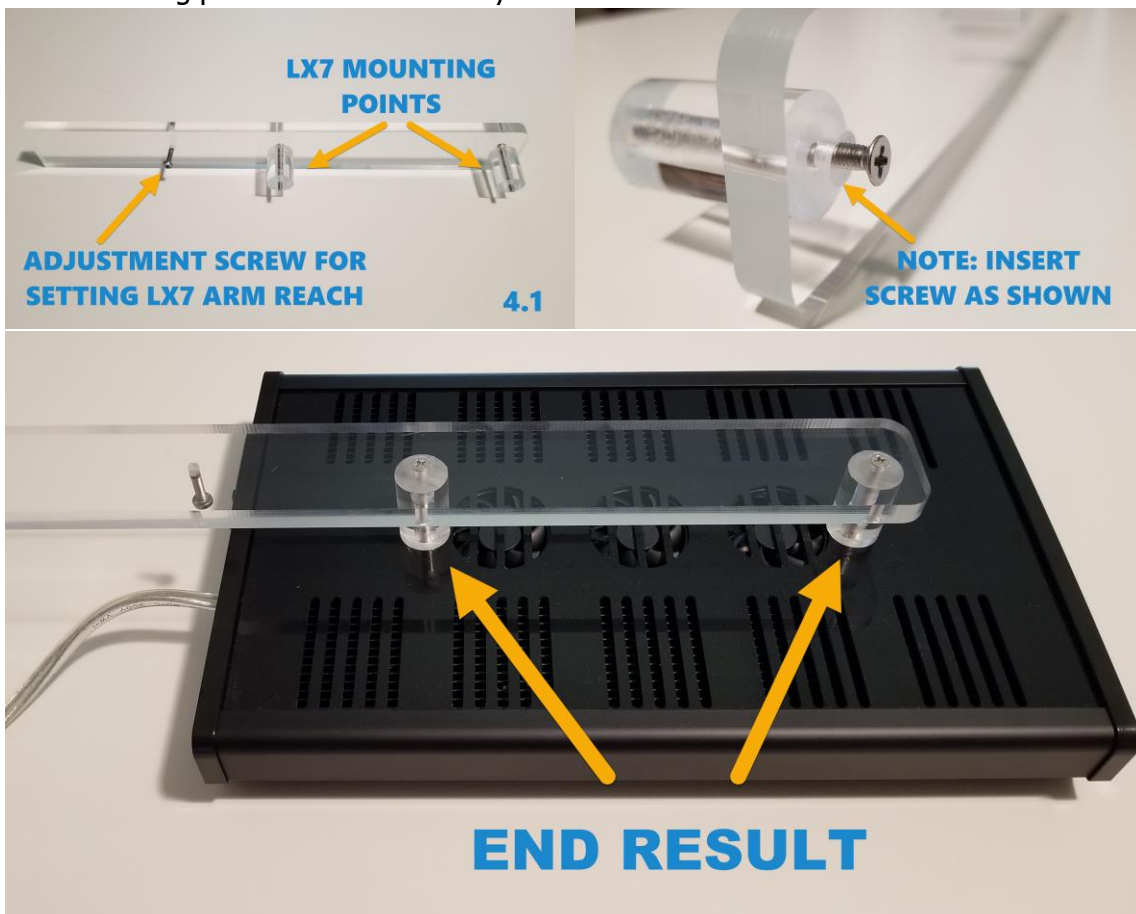
2. Insert locking nut into long aluminum frame as shown below.



3. Insert bolt into knob. Make sure bolt is inserted correctly!



4. Use remaining pieces to assemble acrylic arm and mount Mitras LX7.





5. Drill two (2) holes into the backwall of the stand. These holes will be used for passing through the two bolts from **step 3** to secure the Flex Mount to your aquarium stand.
6. Install Flex Mount to the back of the stand.

NOTE: Included in the packaging is an optional aluminum cover for concealing the LX7's power cord. You can either run the power cord and use the aluminum cover OR you can forego the cover and proceed with mounting.

- a. You can either attach the Flex Mount BEFORE mounting LX7
- b. Mount LX7 to Flex Mount, run power cord, use aluminum cover, then attach the Flex Mount.

### Flex Mount stand attachment / height adjustment

- To attach the Flex Mount to the back of the stand, pass the two bolts through the drilled holes to meet the locking nuts placed inside the Flex Mount.
- Adjust height of Flex Mount, then tighten the bolts to the locking nuts by using the 5/32 Allen Key or wrench.
- Turn the knobs to achieve a tighter hold onto the aquarium stand.