

# Mitras LX7

## Emergency Update Guide



Instructions for performing an emergency update on the Mitras LX7

As of 2017-06-16

## Table of Contents

<b>1</b>	<b>EMERGENCY UPDATE INFORMATION .....</b>	<b>3</b>
<b>2</b>	<b>TOOLS REQUIRED FOR THE EMERGENCY UPDATE .....</b>	<b>3</b>
<b>3</b>	<b>PREPARING THE LX7 FOR EMERGENCY UPDATE .....</b>	<b>3</b>
<b>4</b>	<b>LOADING THE USBVCOM DRIVER FOR EMERGENCY UPDATE .....</b>	<b>3</b>
<b>5</b>	<b>PERFORMING THE EMERGENCY UPDATE .....</b>	<b>6</b>

# 1 Emergency Update Information

If your Mitras LX7 update was interrupted and resulted in an unresponsive unit, you can still recover the device by following the Emergency Update instructions below.

Please be sure to follow these steps exactly as described.

## 2 Tools Required for the Emergency Update

In order to perform an Emergency Update, you will only need a tool small enough to fit into the side opening of the LX7. A paperclip or plastic object will suffice. You do not need to open the LX7 to perform this update!



### Caution

If you will be using a metal object, please use caution to not touch any of the surrounding hardware.

## 3 Preparing the LX7 for Emergency Update

To prepare for the Emergency Update, you must first have the LX7 powered ON and have the USB cable connected to it and your PC.

## 4 Loading the USBVCOM Driver for Emergency Update

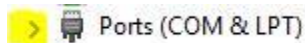
In this step, you will manually activate the Mitras LX7's programming mode.

To do this, you must first open Windows Device Manager by typing *Device Manager* into the Windows search feature and selecting *Device Manager* from the list of search results.

**TIP**

You can also open *Device Manager* by right-clicking on the Windows logo on the lower left corner of your screen and selecting *Device Manager*.

With Device Manager opened, you will see an arrow pointing towards *Ports (COM & LPT)*.



Click on the arrow and a list of communication ports will appear.

On the side of the LX7, there is second hole to the right of the USB port. Behind this hole is a *Blue* reset button. Take a small tool and press and hold the *Blue* reset button for approximately 5 seconds, then release. Doing this will put the Mitras LX7 in programming mode.

Shortly after the reset button is released, the USBVCOM driver will be loaded and displayed in Device Manager. Go back to the Device Manager window and see that a new entry has been added to *Ports (COM & LPT)*. This new addition will be the *USBVCOM* driver.



Take note of the *USBVCOM* COM port number you see in YOUR Device Manager. You will need to know this COM port number for the next step.

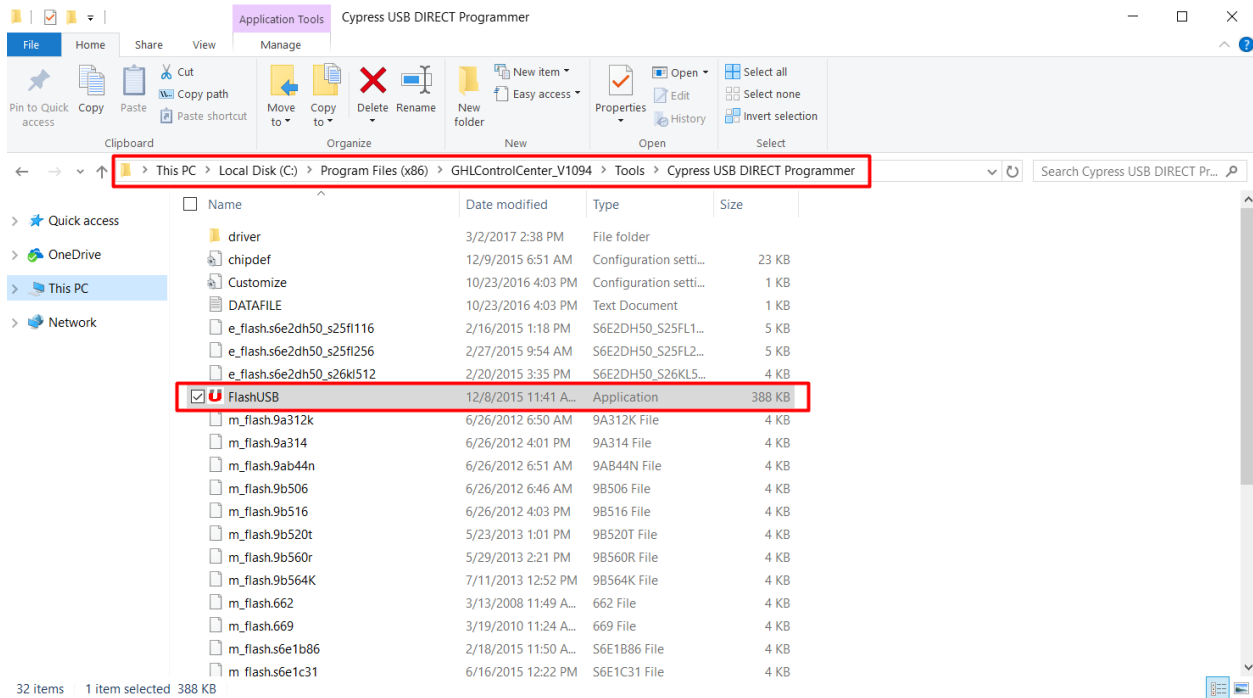
**TIP**

If you do not see "USB port" or "USBVCOM" then it is possible that the driver must be manually installed. Steps for manually installing this driver can be found on our GHL YouTube channel: [https://youtu.be/h\\_C5X3X-Ce0](https://youtu.be/h_C5X3X-Ce0)

## 5 Performing the Emergency Update

In this step, you will be using the flasher tool to do the emergency update.

This tool can be found in the GHL Control Center program directory. Go to “This PC” on your computer, then: C:\ProgramFiles\GHLControlCenter\_V1xx\Tools\FUJITSU USB DIRECT Programmer\GHL\_Flash.exe



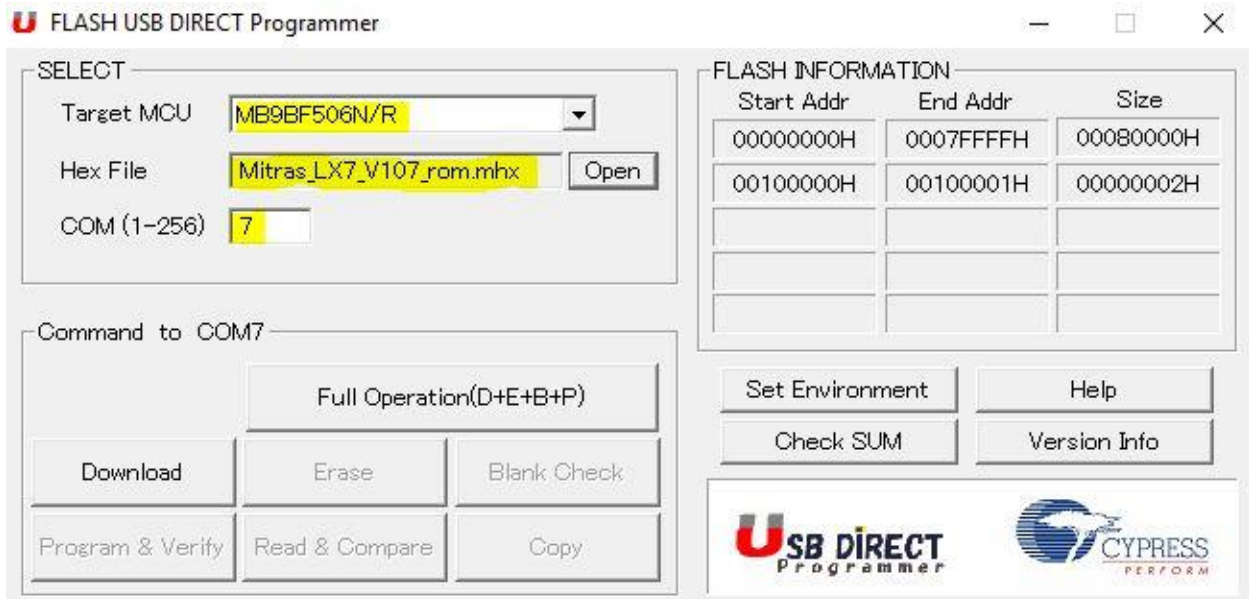
Start the flasher tool by double-clicking on *FlashUSB*.

When the flasher tool opens, change the settings on the flasher tool to the following:

**Target MCU:** MB9BF506N/R

**Hex File:** Click *Open* to load the Mitras LX7 firmware

**COM (1-256):** Interface for the update (This is the COM number listed beside “USBVCOM” in YOUR Device Manager. For example, see the USBVCOM example illustration on Page 4, COM7)

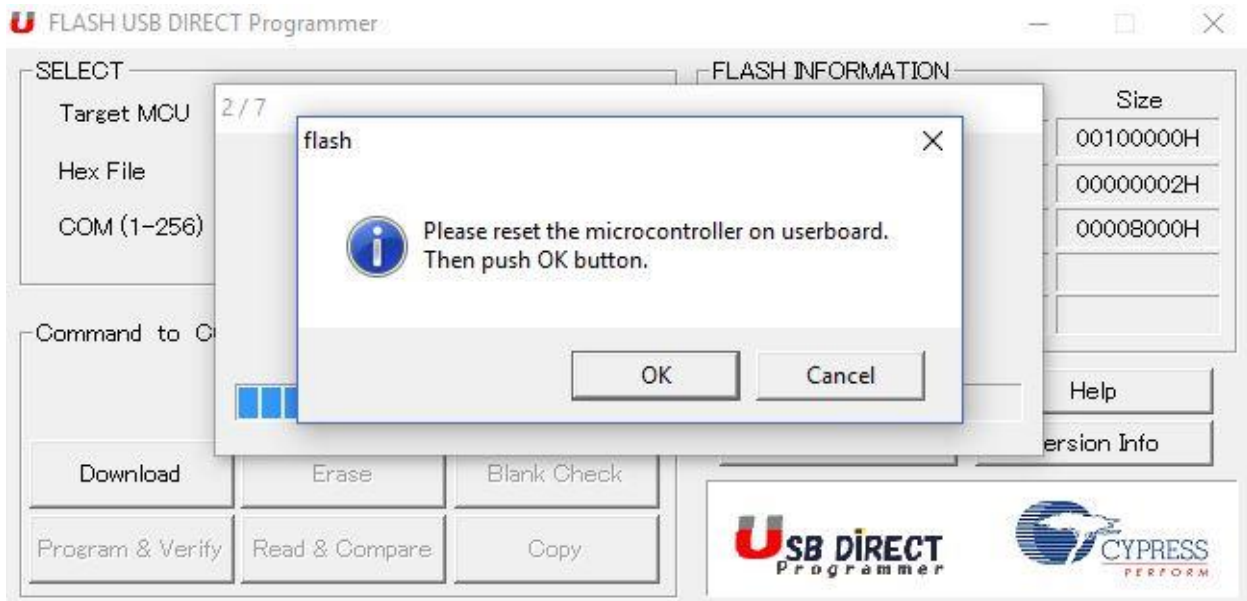


Load the firmware file by clicking "Open", then navigate to the firmware file and select it.

You can find the firmware in the program directory of GHL Control Center. When you click Open, select, "This PC", then: C:\ProgramFiles (x86)\GHLControlCenter\_V1xxx\Firmware\Mitras LX7

In the "Mitras LX7" folder, you will see the firmware file, listed as "Mitras\_LX7\_V1xx". It has the extension ".mhx", For example, "Mitras\_LX7\_V107.mhx".

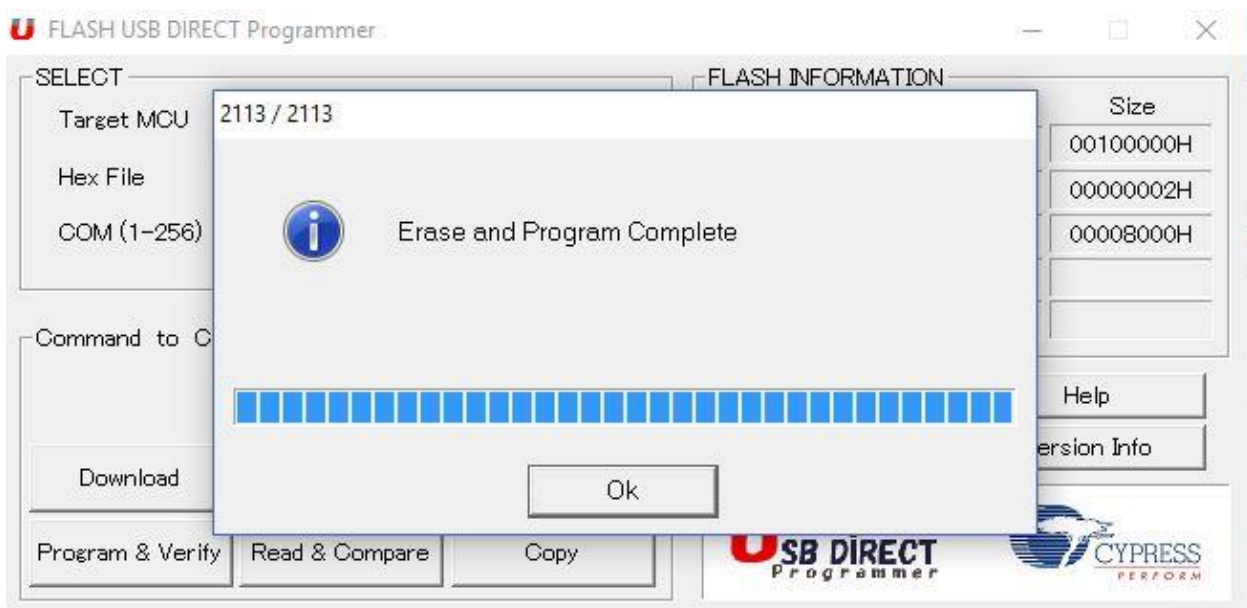
Now click on "Full Operation" and the download window appears.



When the above message pops up, press and hold the reset button for at least 5 seconds, then release.

Click "OK" on the above message and the download should start.

If this is not the case, most likely the wrong interface was chosen or the Mitras LX7 did not go into download mode. In this case, check your settings and click on "Full Operation" again and press the reset button on the Mitras LX7 for at least 5 seconds, then click "OK".



If the download was successful, click "OK" and exit the flasher tool (close program). Briefly press the reset button on the Mitras LX7 and the device should restart. If this is not the case, power OFF the fixture, wait 5 seconds, then turn it back on.

During the boot-up phase, the new firmware version will be displayed on the fixture's side display.