

# ProfiLux 4

## Emergency Update Guide



Instructions for performing an emergency update on the ProfiLux 4  
As of 2017-02-03

## Table of Contents

<b>1</b>	<b>EMERGENCY UPDATE INFORMATION .....</b>	<b>3</b>
<b>2</b>	<b>TOOLS REQUIRED FOR THE EMERGENCY UPDATE .....</b>	<b>3</b>
<b>3</b>	<b>HOW TO OPEN THE PROFILUX 4 .....</b>	<b>3</b>
<b>4</b>	<b>LOADING THE USBVCOM DRIVER FOR EMERGENCY UPDATE .....</b>	<b>5</b>
<b>5</b>	<b>PERFORMING THE EMERGENCY UPDATE.....</b>	<b>6</b>

## 1 Emergency Update Information

If your ProfiLux 4 update was interrupted and resulted in an unresponsive unit, you can still recover the device by following the Emergency Update instructions below.

Please be sure to follow these steps exactly as described.

## 2 Tools Required for the Emergency Update

In order to perform an Emergency Update, you will be required to open the ProfiLux 4. To do this, you will need a 3/32 Allen Wrench.

## 3 How to Open the ProfiLux 4

To prepare for the Emergency Update, you must first disconnect all cables connected to the ProfiLux 4 and place the device upside down on a static-free surface. Be sure to place the device on a soft surface so that it does not get scratched.



Using the 3/32 Allen Wrench, remove the 4 screws from the bottom of the ProfiLux 4.

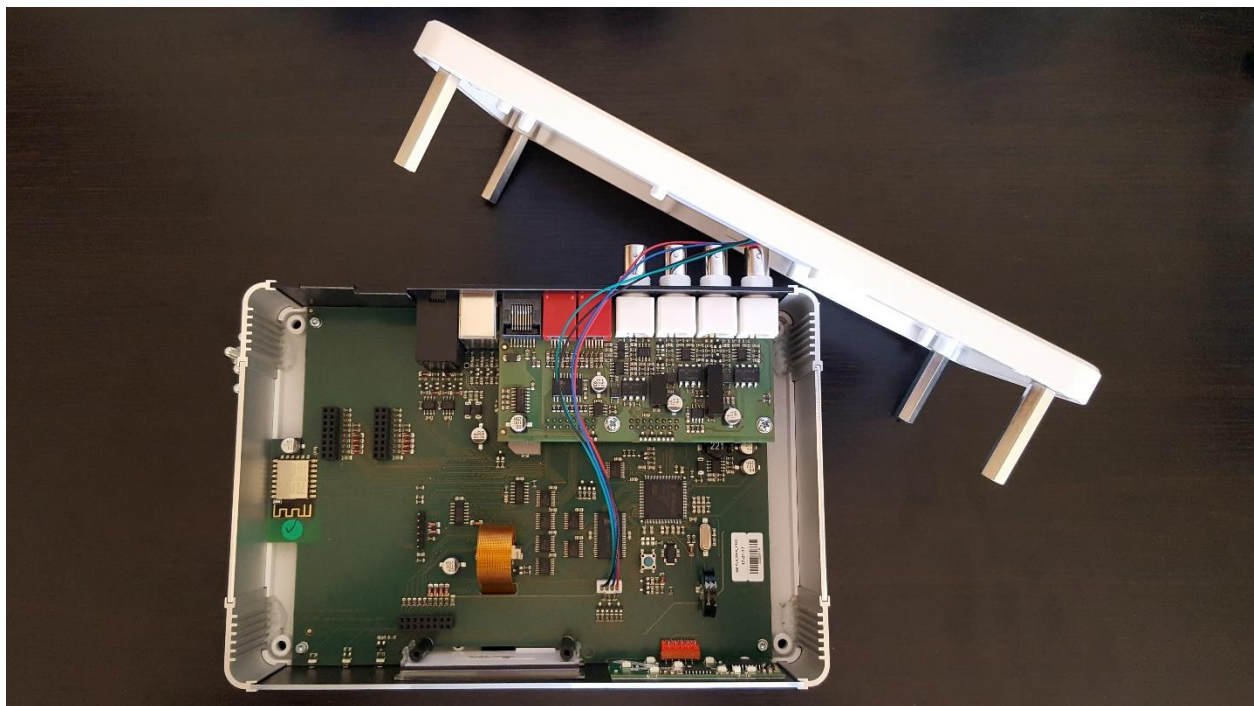
With the 4 screws removed, carefully place the device in the upright position and slowly pull off the top cover by holding both halves of the casing together.



### WARNING

Please note that there are cables connecting the top cover's LED logo light to the controller's main board. DO NOT pull the cover off too quickly.

Position the top cover as shown in the illustration below:



Connect the USB cable to an available port on your PC and to the USB port of the ProfiLux 4. Once both ends of the USB cable are connected, connect the power supply to the device.

## 4 Loading the USBVCOM Driver for Emergency Update

In this step, you will manually activate the ProfiLux 4's programming mode.

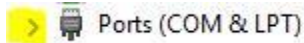
To do this, you must first open Windows Device Manager by typing *Device Manager* into the Windows search feature and selecting *Device Manager* from the list of search results.



## TIP

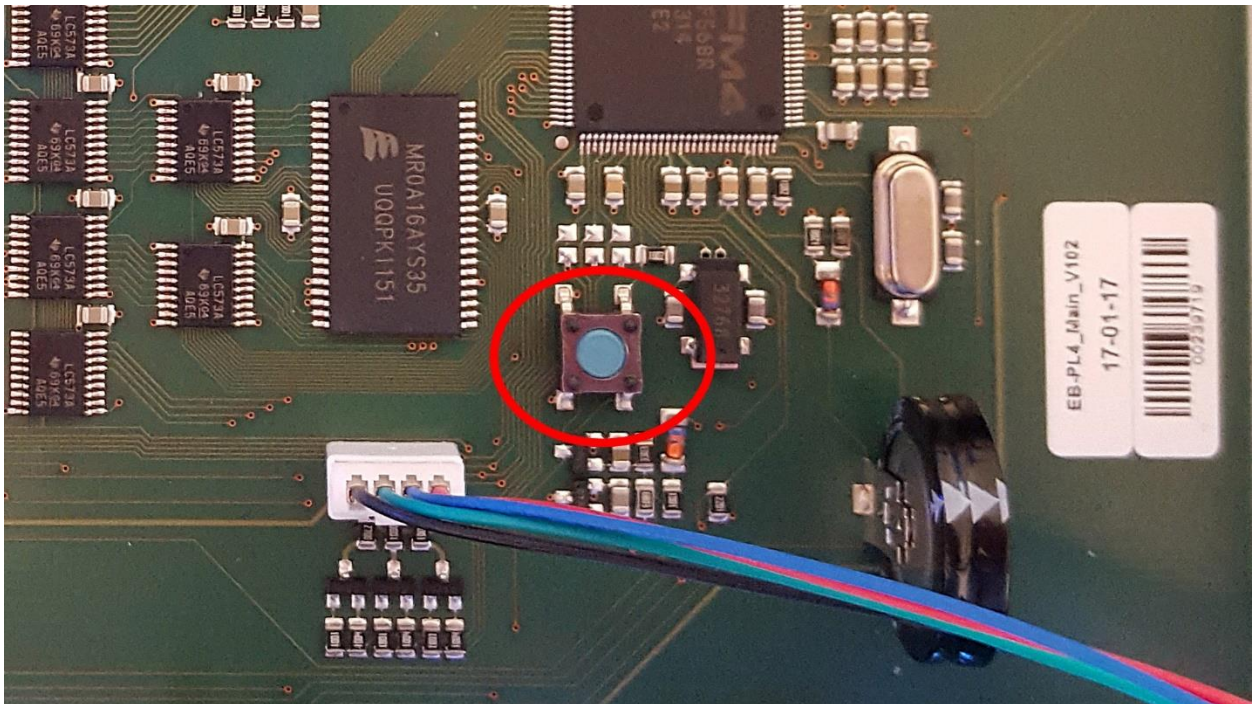
You can also open *Device Manager* by right-clicking on the Windows logo on the lower left corner of your screen and selecting *Device Manager*.

With Device Manager opened, you will see an arrow pointing towards *Ports (COM & LPT)*.



Click on the arrow and a list of communication ports will appear.

On the ProfiLux 4, press and hold the *Blue* reset button for approximately 5 seconds, then release. Doing this will put the ProfiLux 4 in programming mode.



Shortly after the reset button is released, the USBVCOM driver will be loaded and displayed in Device Manager. Go back to the Device Manager window and see that a new entry has been added to *Ports (COM & LPT)*. This new addition will be the *USBVCOM* driver.





Take note of the *USBVCOM* COM port number you see in YOUR Device Manager. You will need to know this COM port number for the next step.



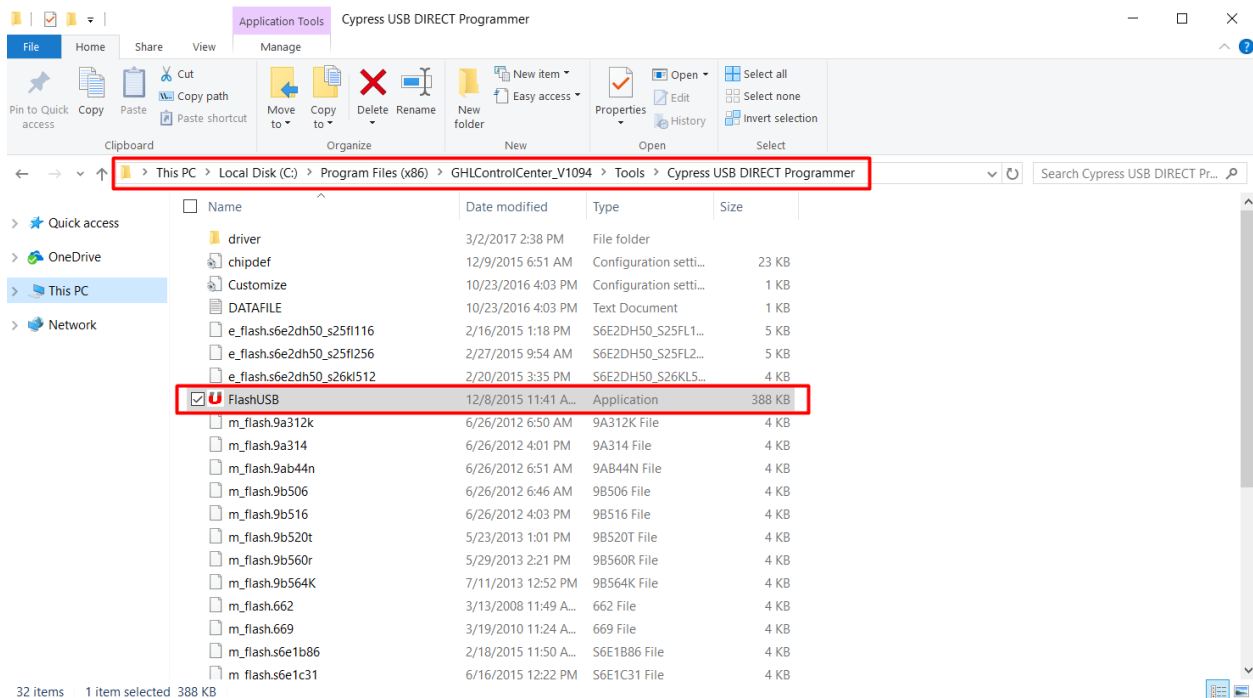
### TIP

If you do not see “USB port” or “USBVCOM” then it is possible that the driver must be manually installed. Steps for manually installing this driver can be found on our GHL YouTube channel: [https://youtu.be/h\\_C5X3X-Ce0](https://youtu.be/h_C5X3X-Ce0)

## 5 Performing the Emergency Update

In this step, you will be using the flasher tool to do the emergency update.

This tool can be found in the GHL Control Center program directory. Go to “This PC” on your computer, then: C:\ProgramFiles\GHLControlCenter\_V1xxx\Tools\FUJITSU USB DIRECT Programmer\GHL\_Flash.exe



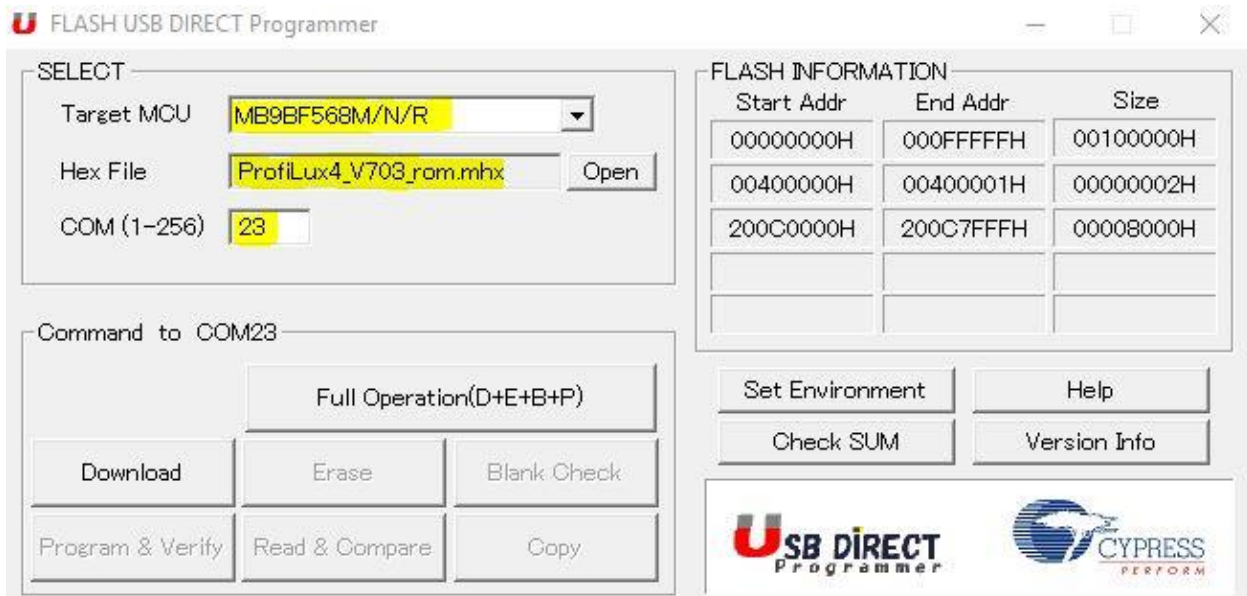
Start the flasher tool by double-clicking on *FlashUSB*.

When the flasher tool opens, change the settings on the flasher tool to the following:

**Target MCU:** MB9BF568M/N/R

**Hex File:** Click *Open* to load the ProfiLux 4 firmware

**COM (1-256):** Interface for the update (This is the COM number listed beside "USBVCOM" in YOUR Device Manager. For example, see the USBVCOM example illustration on Page 5, COM7)



Load the firmware file by clicking "Open", then navigate to the firmware file and select it.

You can find the firmware in the program directory of GHL Control Center. When you click Open, select, "This PC", then: C:\ProgramFiles\GHLControlCenter\_V1xxx\Firmware\ProfiLux 4

In the "ProfiLux 4" folder, you will see the firmware file, listed as "ProfiLux4\_V7xx". It has the extension ".mhx", For example, "ProfiLux4\_V703\_rom.mhx".

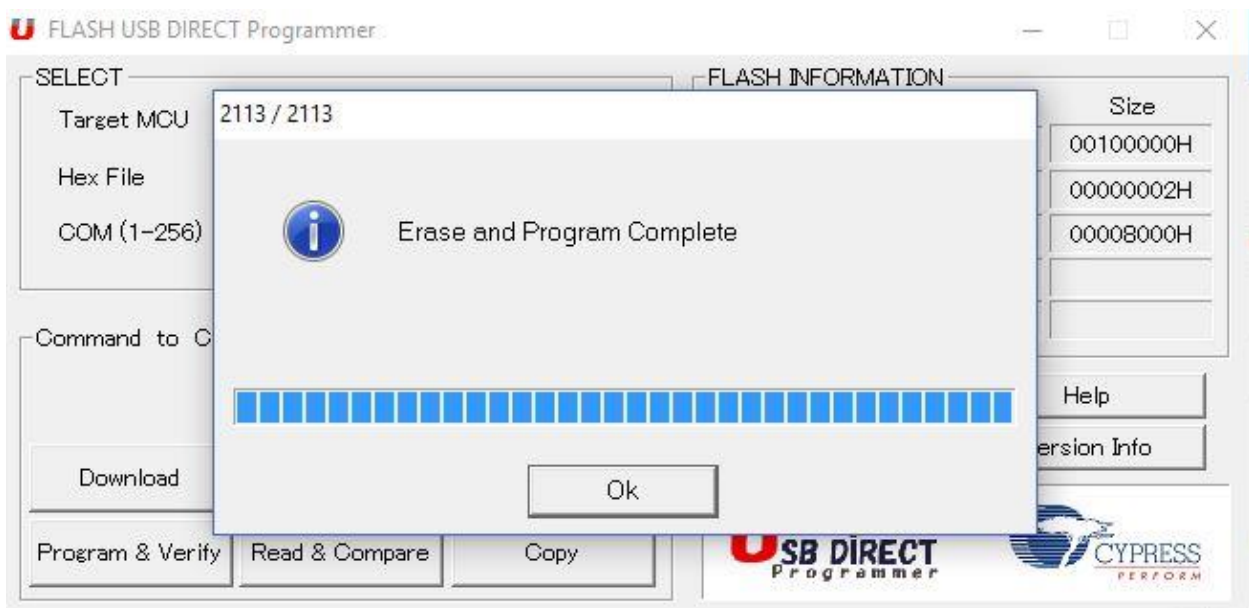
Now click on "Full Operation" and the download window appears.



When the above message pops up, press and hold the reset button for at least 5 seconds, then release.

Click "OK" on the above message and the download should start.

If this is not the case, most likely the wrong interface was chosen or the ProfiLux 4 did not go into download mode. In this case, check your settings and click on "Full Operation" again and press the reset button on the ProfiLux 4 for at least 5 seconds, then click "OK".



If the download was successful, click "OK" and exit the flasher tool (close program). Briefly press the reset button on the ProfiLux 4 and the device should restart.



After completing the update, disconnect the ProfiLux 4 from the power supply and USB. Reassemble the device and please make sure that the cables going into the LED Logo light do not get jammed or caught between the cover enclosure points.